

SINGLE-SIDED FIREBOX

The classic firebox design that delivers the most elegant panoramic view of the flame.

COMPLETE PEACE OF MIND

Tap into the beauty of realistic flames in a totally unique fire. NetZero Waterplace uses pure water vapor to simulate dancing flames with zero heat or fuels.

NATURAL AND COLORED FLAMES

Enjoy the glow of natural orange flames or with Waterplace Platinum, choose from over 30 brilliant shades of colored flames.

ALL YOU NEED IS WATER

The only fuel you need is water. Run a direct water line for a constant supply or enjoy up to 20 hours of continuous flame with the integrated tank and pumping system.

REFILLING SYSTEM

The tank and integrated pump allow for up to 20 hours of run time, or with NetZero Waterplace Platinum you can connect directly to a plumb line for unlimited hours of ambiance.

SMART CONTROLS

Control the fire with the included remote, app on your smartphone or home automation system.



INCLUDED



INCLUDED



OPTIONAL

FLAME CONTROL

Adjust the flame height and speed at the touch of a button.



AVAILABLE OPTIONS Choose from log sets, media and liners. The safe, cold vapor flames allow you to change out design accessories easily.

LOG SETS



BIRCH HD



DRIFTWOOD



WHITE OAK



NORWAY SPRUCE

MEDIA



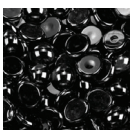
GLASS DIAMONDS



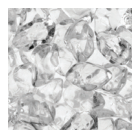
BLACK DIAMONDS



ICE CUBES



BLACK GLASS

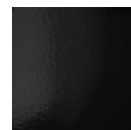


ICEBERG CHIPS



RIVER ROCK

LINERS



BLACK GLASS



BLACK BRICK

Burner Specifications

Tank Capacity	6.5 liters
Run Time	20 hours
Weight	70.5 lbs - Waterplace 86 lbs - Waterplace Platinum
Flue	Not required
Electrical Connection	120V, 60HZ, min. 3.5A dedicated breaker
Application	For indoor use only
Flame Color	Natural Orange - Waterplace Over 30 Colors - Waterplace Platinum

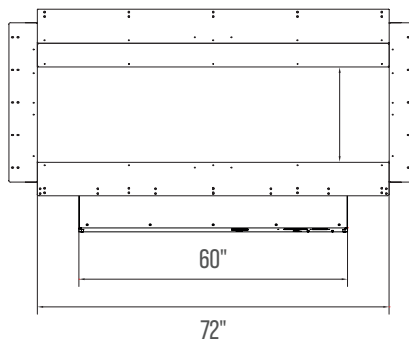
FRAMING DIMENSIONS

W (in)	W1 (in)	W2 (in)	D (in)	D1 max (in)	H (in)	H1 min (in)
76"	64-70"	3-6"	21"	2"	27-1/2"	12"

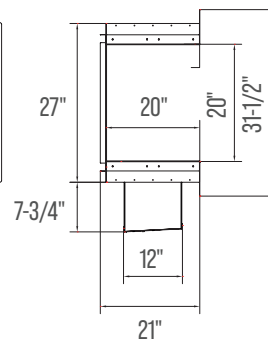
FIREBOX DIMENSIONS

For installation specifications and required clearances, refer to the installation manual.

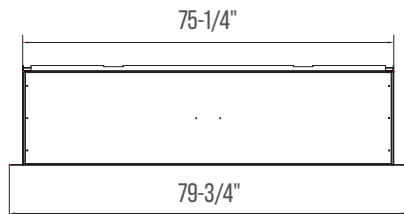
Front View



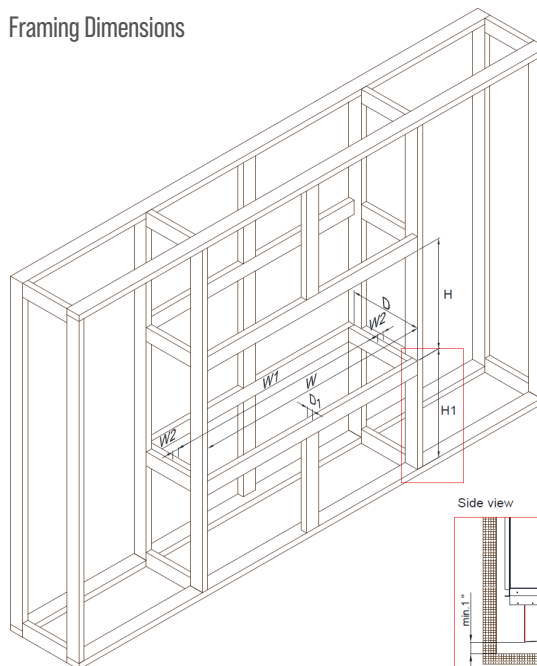
Side View



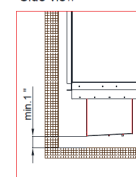
Top View



Framing Dimensions



Side view



UP TO 20 FEET OF FLAME

Connect any combination of burners to create a continuous line of flame up to 20 feet.



WATER HARDNESS

Water hardness levels will affect performance and flame height.



INSTALLATION

Avoid drafty areas for optimal flame performance. Refer to the installation manual for guidance.



MAINTENANCE

Minimal maintenance is required. Refer to the Maintenance Checklist for details.

Manufactured to UL Standards

NetZero is a distributor of these products, which are designed and manufactured by AFIRE Ltd. THERE ARE NO WARRANTIES WHICH EXTEND BEYOND THE DESCRIPTION ON THE FACE HEREOF AND SUPPLIED MANUALS. IMPLIED WARRANTIES OF MERCHANTABILITY, IMPLIED WARRANTIES OF FITNESS, IMPLIED WARRANTIES OF WORKMANSHIP AND OTHER IMPLIED WARRANTIES ARE EXCLUDED BY NETZERO.