

**AA-11-05247**  
**WATERPLACE 40" WHITE OAK HD LOG SET**  
**INSTALLATION INSTRUCTIONS**



**Caution:** The log pieces are fragile. Exercise extreme care when opening the log set package and removing individual log pieces.

# NETZERO FIRE

## Included Logs

Open the packaging and remove the logs. Use the guide below to identify the logs.



35-01-02015 LEFT FRONT LOG



35-01-02014 LEFT BACK LOG



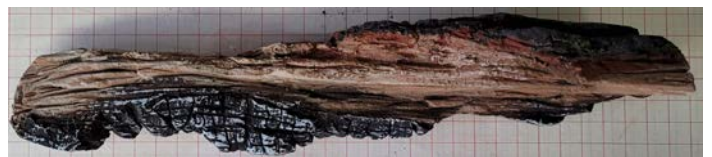
35-01-02016 CENTER BACK LOG



35-01-020 CENTER FRONT LOG



35-01-02019 RIGHT FRONT LOG



35-01-02018 RIGHT BACK LOG

# NETZERO FIRE

## Installation Instructions

This log set is for use with the 40" Waterplace burners. The log set can also be used with the Waterplace 20" White Oak HD Log Set to cover the 60" Waterplace burners. To install both log sets on a 60" burner first follow the instructions to install the 40" waterplace log set starting at the right side of the burner. Then install the 20" waterplace log set on the left side of the burner as shown at the end of these instructions.

The log set must be placed on the burner as shown in these instructions. The logs have been designed to allow the mist from the burner to rise around the logs. Failure to correctly place the logs can result in poor burner performance.

It is important to follow all recommendations in the burner manual for the quality of water used in the burner. If excessively hard water is used in the burner calcium deposits may form on the logs and burner. The logs can be cleaned with a soft brush to remove any deposits.

1)

Start at the right side of the burner and place the right front log on the burner top. Angle the log as shown and push it back so that it is against the flange that sticks up on the burner top.





# NETZERO FIRE

2)

Next, place the right back log across the burner. The end of the log has a flat spot that will sit on the top of the burner. The log will then rest in the notch on the top of the right front log.



3)

Move to the center of the burner and place the center back log over the burner. Place the log so that it is to the left of the center line of the burner shown as a line in the photo. The log will cross the burner at an angle. Pull the log forward so that the log is against the flange that sticks up on the back side of the burner.



# NETZERO FIRE

4)

Place the center front log on the burner. The back of the log will sit in the groove on the center back log.



5)

Next, set the left back log on the burner. It will be placed on the back of the burner. Pull the log forward so that it is against the flange that sticks up on the burner top.



# NETZERO FIRE

6)

Finally, place the left front log over the burner. This log will sit on the left back log and cross the burner as shown in the photo.



The log set installation is then complete for the 40" Waterplace burner. If you are installing both of the log sets onto a 60" Waterplace burner continue with the instructions on the next page.



# NETZERO FIRE

To install both log sets on a 60" burner first follow the previous instructions to install the 40" waterplace log set starting at the right side of the burner. Then install the 20" waterplace log set on the left side of the burner as shown below. Reference the instructions with the 20" log set to identify the logs.

7)

Place the left-side log across the burner as shown in the photo below. The bottom of the log is flat and will allow the log to sit on the burner.



8)

Place the right-side log on the burner as shown. The log will rest in the notch on the top of the left-side log. Make sure the log is rotated so that the flat part on the end of the log is sitting on the burner top.



# NETZERO FIRE

9)

Place the front log as shown so that it is resting in the notch on the right-side log. The installation is then complete.



The completed log installation on the 60" burner.

