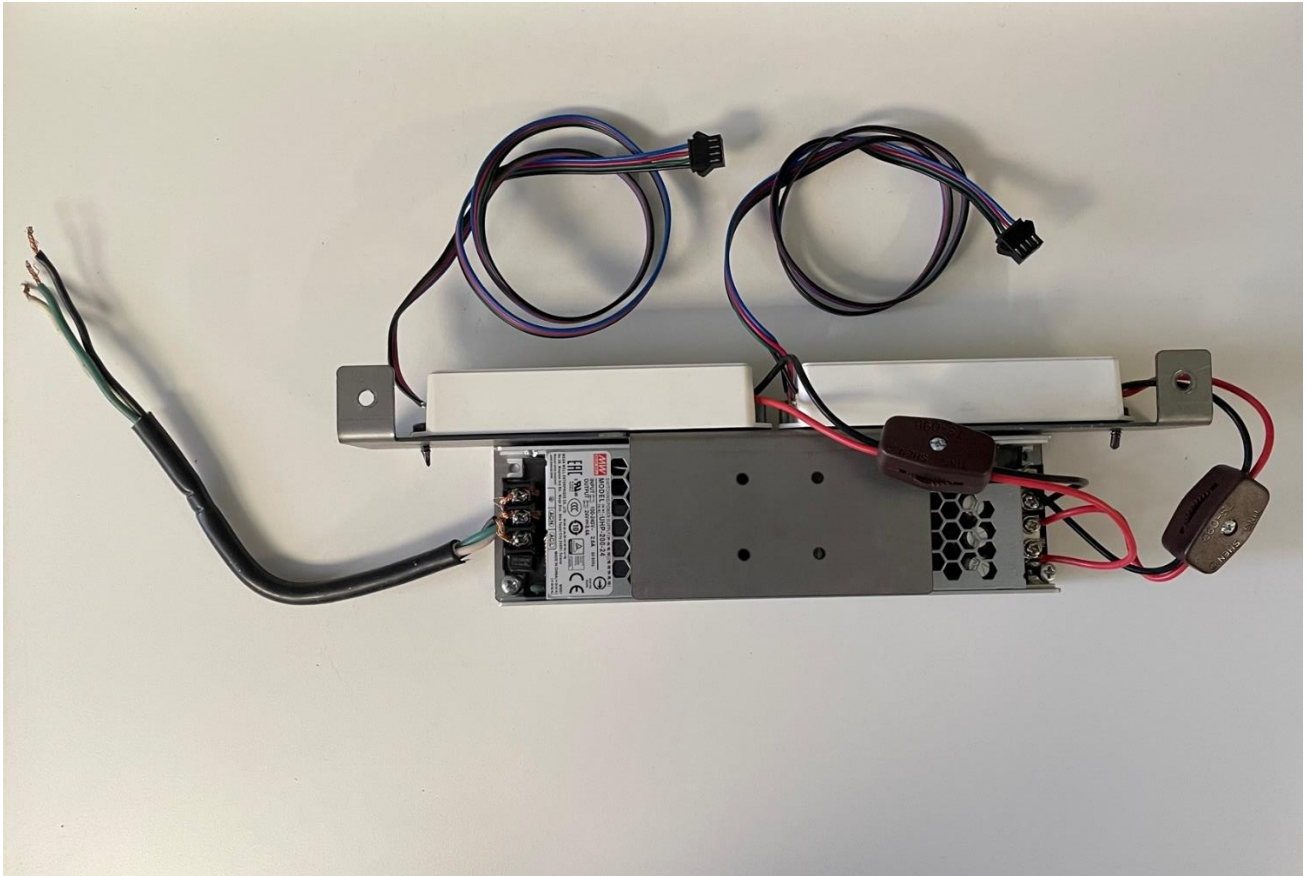


- **NetZero LED Component Kit Installation Instructions**

AA-11-04931



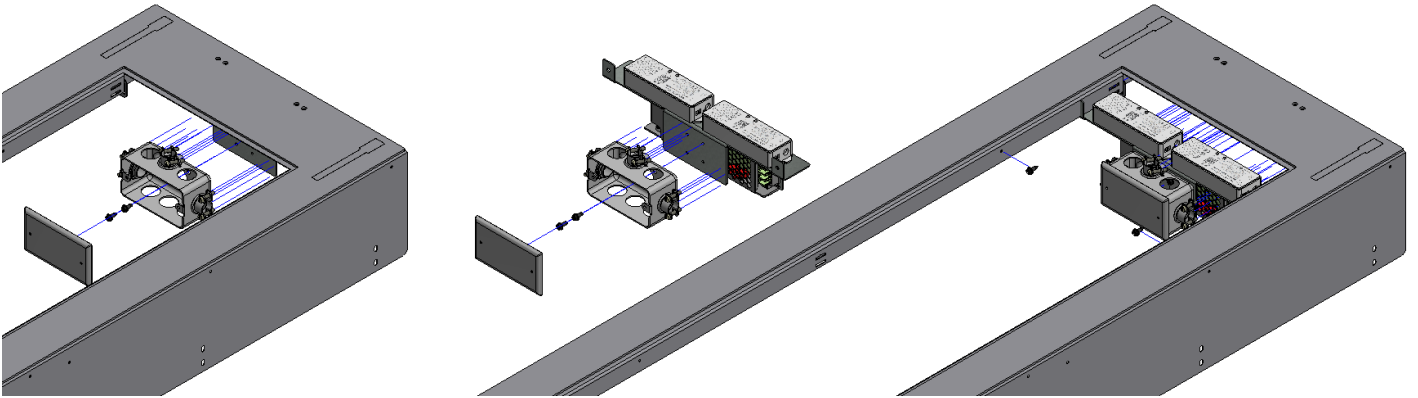
REQUIRED TOOLS

Drill with 1/4" nut driver

WARNING: If the information in these instructions in conjunction with the installation manual for the fireplace are not followed exactly, a fire or explosion may result causing property damage, personal injury or loss of life.

INSTALLING INTO THE FIREBOX

- 1) If the burner is currently installed, start by removing the burner from the firebox along with any media and glass that may be installed.
- 2) Remove the bracket that the junction box is secured to by removing the two screws holding it to the firebox.
- 3) Remove the junction box from the bracket by removing the cover plate and removing the two screws securing it to the bracket.
- 4) Reattach the junction box to the LED Component Kit bracket in the same location and orientation.
- 5) Install the LED Component Kit in the same location and orientation as the original bracket that was removed.

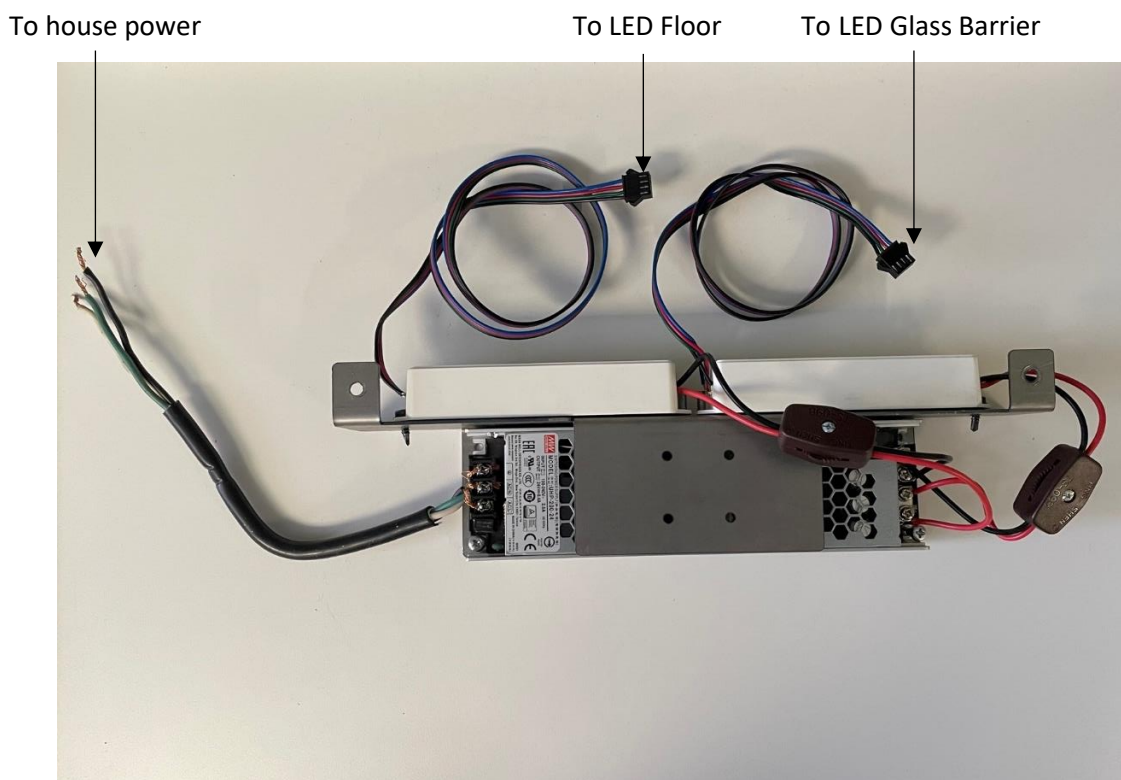


Installing the LED Component kit to the firebox

WIRING LED CONTROLLER

NOTE: There are two LED Controllers so that the optional LED Floor Kit and LED Glass Barrier can be controlled independently if you so choose.

The power supply leads can be wired into the junction box with the house power and unit power wires.



RECONNECTING COMPONENTS

Follow the individual component installation instructions for connecting the LED component kits such as the LED Floor Kit and the LED Glass Barrier.

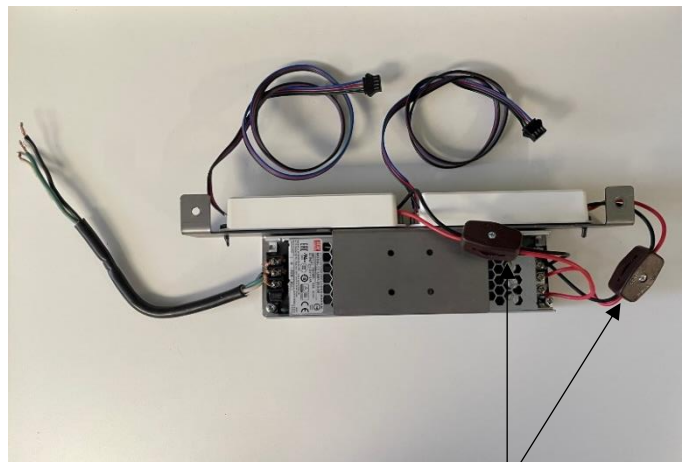
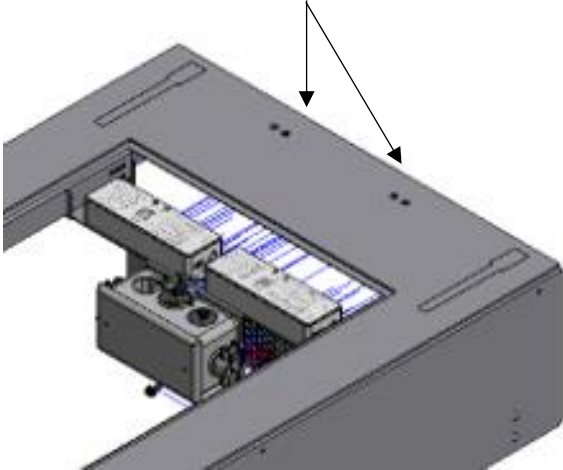
The remote comes paired to the controllers already, all you need to do is connect the LED kits to the LED controller leads.

NOTE: THE INSTRUCTIONS BELOW ARE ONLY FOR RESYNCRING THE CONTROLLERS TO THE REMOTE

If you are installing both the LED Floor Kit and the LED Glass Barrier you have two options when connecting the components to the LED controllers. A) Connect both kits to one controller and both the LED floor and LED Glass barrier will always be the same color. B) Connect each kit to its own controller allowing them to be color controlled independently.

- 1) Turn off the rocker switches for both LED controllers. There are status indicator lights visible through the floor access. If there is no light visible the power to the LED controller is off.
- 2) Restore power to the LED controller you would like to connect to the component by rolling the corresponding rocker switch on and within 3 seconds of restoring power press the "I" of the zone 1 control. If the pairing is successful, the status indicator lights will blink green 3 times slowly on the floor access of the firebox for the selected controller.
- 3) If you are not using the second controller leave the second rocker switch in the off position.
- 4) If you are using the second LED controller, restore power to the second LED controller that you would like to connect to the second component by rolling the corresponding rocker switch on and within 3 seconds of restoring power press the "I" of the zone 2 control. If the pairing is successful, the status indicator lights will blink green 3 times slowly on the floor of the firebox for the selected controller.

Status indicator and SYNC button access holes



Rocker Switches



When the light on, short press any zone of "I" **1 time** within 3 seconds

The LED Component Kit installation is now complete. Replace all the components that were removed to gain access. Replace these components in the reverse order from which they were removed. See the next page for the quick setup LED remote and smartphone connection instructions. To control the LED lights with your smartphone, Google Home, or Amazon Alexa proceed to the LED controller instructions. The complete instructions for the remote and controller are also provided in the kit if more information is necessary.

Mi • Light[®]

FUT095 RGBW remote control with buttons FUT096 Touch screen RGBW remote control

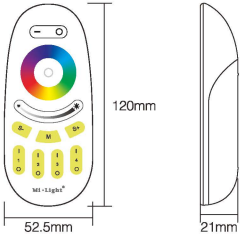
Product Features

This manual describes two types of RGBW remote controls used for our RGBW product. Both of them have same functions but different design. Each remote control can control the led lights up to four different zones, change the color, dim/brighten the lights, warm/cool white, different programs. In this manual.

Technical Parameters

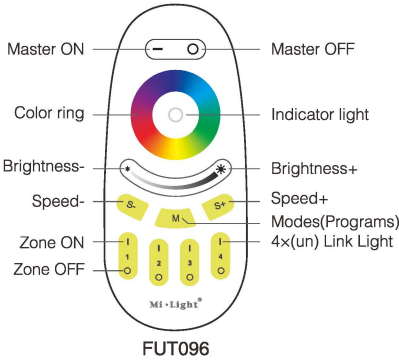
Product Name: RGBW remote control with buttons
Model No.: FUT095
Voltage: 3V(AAA * 2PCS)
Transmission Frequency: 2.4GHz
Modulation Method: GFSK
Transmitting Power: 6dBm
Standby Power Consumption: 20uA
Control Distance: 30m
Size: 52.5*21*120mm

Product Name: Touch screen RGBW remote control
Model No.: FUT096
Voltage: 3V(AAA * 2PCS)
Transmission Frequency: 2.4GHz
Modulation Method: GFSK
Transmitting Power: 6dBm
Standby Power Consumption: 20uA
Control Distance: 30m
Size: 52.5*21*120mm



Products Key Diagram

Remark: Hold "I" to get white mode. Under white mode, press 'S-' to get warm white, press 'S+' to get cool white. Under color mode, press 'S+/S-' for saturation control. When press 'M', S+/S- can adjust the speed of the dynamic modes. To dim all RGBW lights at once or change the color, first press "Master ON". to do this with individual lights, first press "Zone ON". secondly, choose the color or brightness according to the color ring or brightness ring.

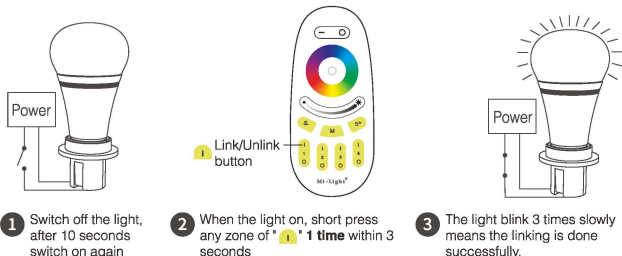


FUT096

Linking&Unlinking

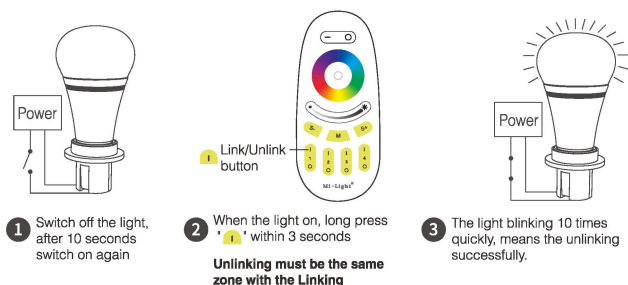
Remark: The light can be working after linking with the remote controller.

Linking Instructions



! If the light not blink slowly, the linking failed, Pls switch off the light again, and follow the above steps again.

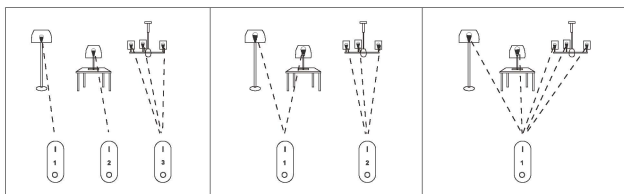
Unlinking Instructions



! If the light not blink quickly, the unlink failed, pls switch off the light again, and follow the above steps to unlink again.

Grouping of several lights

You can add an endless numbers of lights to a zone on the 4 channel remote by linking the lights to different zones. This way you are completely flexible in creating different group combinations. Below you can see some grouping examples.



Remark:

1. The user can re-programme freely as needed. One remote can control countless lamps or controllers, but one lamp or controller can only be controlled by four remotes (Max).
2. Please check the battery installation and controller (totally discharge the power), when you programme after switching off and switching on.

Attention

1. This remote controller only control specified Mi-Light products; not all Mi-Light series can work on this remote controller.
2. In the using of the remote, if the indicated lamp blinking quickly, pls change the battery in time. Pls don't use poor quality battery to avoid the leaking of battery liquid to damage the remote controller.
3. Please keep your finger off the touch ring when installing the batteries, to improve its sensitivity, and use the remote (3 seconds later) after the batteries are installed. Please reinstall the batteries, if the fouch ring is found low-sensitivity.
4. This 2.4GHz remote control system is precise electronic product; don't use it in humid, high temperature, dust and high voltage environment; Saving it at indoor, dry and no static electricity environment.
5. Pls don't use the remote controller on the wide-range metal or strong electromagnetic wave area, otherwise, it will badly affect the controlling distance.

Manual Instruction

WiFi&BT 5-in-1 LED Strip Controller

Model No.: WB5

Please read the instructions carefully before using the controller.

1. Features

The controller is adopted by the most advanced PWM control technology, and has memory function (The light status will keep same as the status before you turn off the light) ; Wireless and 4G controlled by Tuya Smart Life APP.

- 16 Million colors to choose
- Color temperature 2700K~6500K
- Dim brightness / saturation
- Support music rhythm
- Support scene customization
- Timing setting / countdown turn on / off LED light
- Bluetooth wireless control
- Tap-to-Run & automation
- Free screw when connecting to LED strip
- WiFi wireless control
- Smartphone APP control
- Support third party voice control
- Support remote control (control distance 30m)
- Device sharing
- Group control
- 2.4G wireless transmission technology
- Auto-transmitting & Synchronization
- Link/Unlink/Reset Button on the controller

2. Parameters

Model No.: WB5
Input Voltage: DC12V~24V (5.5*2.1mm)
Output: 6A/Channel (Total Output Max. 15A)
Working Temperature: -20~60°C
Communication Mode: WiFi-IEEE 802.11b/g/n 2.4GHz
RF: 2.4GHz Weight: 65g



Smart Link & Unlink: We have 3 methods to Link and Unlink to APP.

1. Long press "SET" 3 seconds, the purple will blink 3 times, the device go into Smart Link/Unlink mode.
2. Use Linked remote, long press the linked Zone ON button for 3 seconds, the purple light will blink 3 times, the device go into Smart Link and Unlink Mode.
3. Switch ON and OFF 3 times(ON-OFF-ON-OFF-ON) within 10 seconds, the purple light will blink 3 times, the device will go into Smart Link and Unlink Mode.

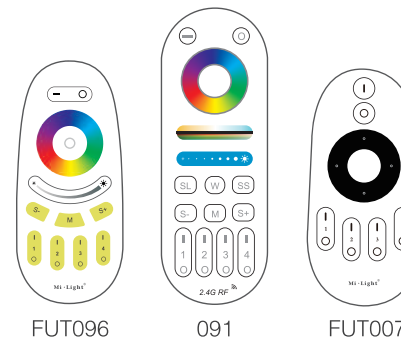
Note:Pilot lamp red light always ON means device is not linked to the APP, need to do above steps to link. Green light aways ON means device is linked to APP; device is controllable.

Switching Output Mode: Short press "SET" button to switch the output mode; The indicating lamp flickering means switching successfully; Different colors flickering correspond to different output mode; Details see below sheet.

White Light Flickering	Yellow Light Flickering	Red Light Flickering	Green Light Flickering	Blue Light Flickering
Single Color Mode	Dual White Mode	RGB Mode	RGBW Mode	RGB+CCT Mode (Default Mode)

6. Remote Controller

Compatible with these remote controls (Purchased separately).
For more details, pls read the remote instruction.



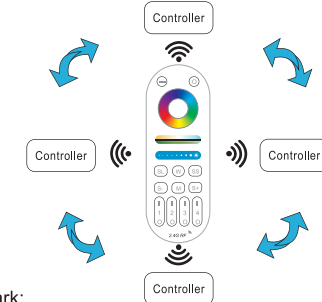
Suggestion: Complete the network distribution of the equipment first, then adjust the output mode Pilot lamp.

Indicating light instruction:

Red light always-on	Green light always-on	Red light blinking	Blue light always-on
Disconnected from network	Networking successfully	Waiting for smart link	WiFi router disconnected but still controllable

3. Auto-synchronization function

Different controllers can work synchronously when they are started at different times, controlled by the same remote, under same dynamic mode and with same speed.

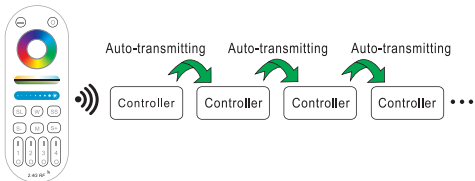


Remark:

1. Indicating Auto-transmitting.
2. Controller will be auto-synchronizing in the same dynamic modes and within 30m controlling distance.

4. Auto-transmitting Diagram

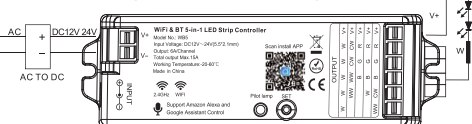
One strip controller can transmit the signals from the remote control to another controller within 30m, as long as there is a strip controller within 30m, the remote control distance can be limitless.



5. Connect to LED strip

⚠ Controller input voltage must be in accordance with the required voltage of LED Strips.
Input voltage=Output Voltage

Connect to Single Color LED strip diagram



Connect to CCT LED strip diagram



Connect to RGB LED strip diagram



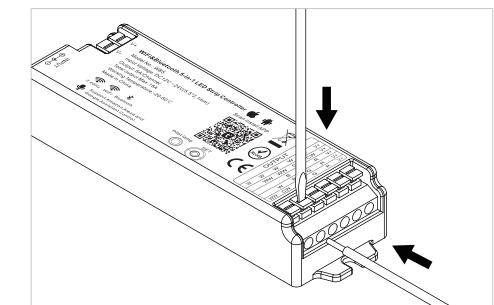
Connect to RGBW LED strip diagram



Connect to RGB+CCT LED strip diagram



8. Free screw when connecting to LED strip



7. Bluetooth control instructions

When the router is disconnected, you can turn on the Bluetooth of your smartphone and connect directly controlled device at a short distance.

≥0.39 in / 10mm

Tuya Smart Life APP WiFi Control Instruction:

1,Download and install [Tuya Smart] APP or [Smart Life] APP

Search for [Smart Life] in Apple or Google store or scan following QR code to download and install the app.

Please click " Register " button to create account while using it in the first time, Log in directly if you already had account.

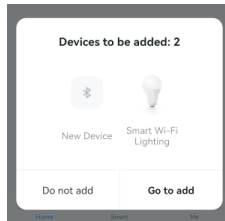
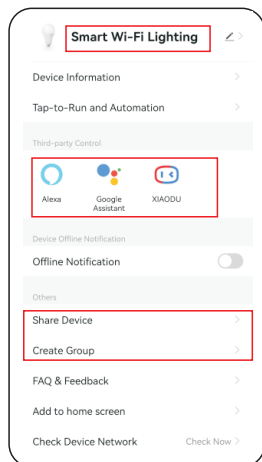


2, Connect to Smartphone

- (1) Connect controller with power supply.
- (2) Confirm Pilot lamp is flashing quickly (2 flashes per second)
If Pilot lamp isn't in fast flashing state, there are two ways to enter:
 - Long press " SET " key until Pilot lamp flashing quickly.
 - Power OFF and ON once, long press Zone ON button of linked remote until the LED strip blinking 3 times.(available remote model: LM091)
- (3) Connect phone with home WiFi network in the 2.4GHz frequency.
- (4) Open homepage of APP and click " + " button at the upper right corner of page.If the pilot lamp is flashing red, it will find the new device automatically.

4,Device name editing, third-party control, device sharing, group control.

- (1) Click " " on the upper right corner of control page to enter edit page, where you can modify device name, icon, etc.
- (2)Click icon under third-party control to view detailed description of third-party control.
- (3) Click " Share Device " to share device with family and friends.
- (4) Click " Create Group " and follow APP prompt after setting is completed, the device can be controlled by group.



(5) Added devices will be displayed on home page after network configuration is successful.

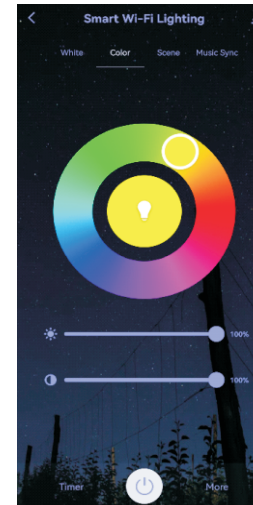
(6) Click device you want to control to enter the control interface.



3,APP Control

- (1) Click " device " or " group " you want to control on homepage to enter control page, where you can control color, saturation, brightness, color temperature, and scene.
- (2) Click music sync to enter music rhythm mode, light will change with rhythm of music.

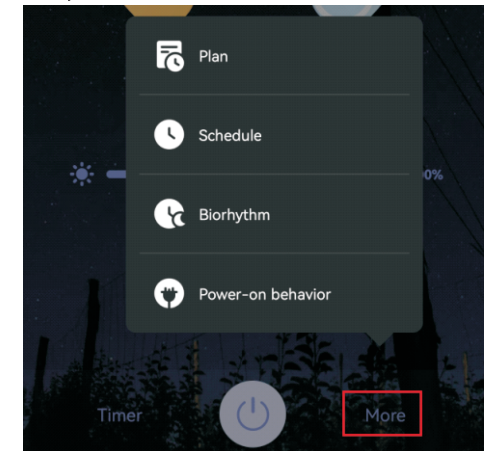
Note: Music rhythm mode requires phone keep on this page



- (3)Click More on the right bottom, you can choose more settings, including Plan, Schedule,Biorhythm and Power-on behavior.

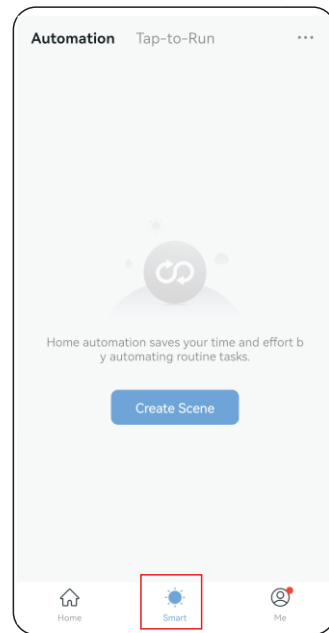
Detailed setting, please read the below links:

<https://developer.tuya.com/en/docs/iot/product-panel-configuration?id=K9s9rhj4i7z8b#title-11-生物节律>

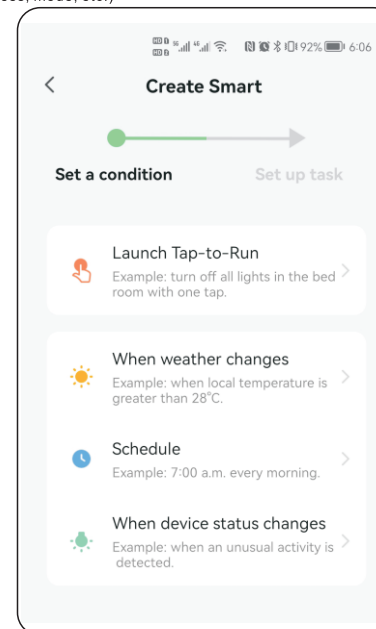


5 Intelligent control

- (1) Click " Smart " at the bottom.
- (2) Click " + " in the upper right corner to create intelligent control.



- (3) In the page of creating smart, you can set command to be executed under the specified conditions (such as: turn on or turn off light, color, brightness, mode, etc.)



⚠ Attention

1. Please check whether the input voltage of the constant voltage power supply is in accordance with the controller, and please check the connection of both the cathode and anode.
2. The working Voltage is DC12~24V,the controller will be broken if the voltage is higher than 24V.
3. Non-professional user cannot dismantle the controller directly, otherwise, it may cause fire and electric shock.
4. The working temperature is-20~60℃; Do not use the device to direct sunlight, moist and other high temperature area.
5. Please do not use controller around the mental area and high magnetic field, otherwise,it will badly affect the control distance.
- 6.When the device load to 15A,wire diameter must be over 1.5mm²



Made in China